

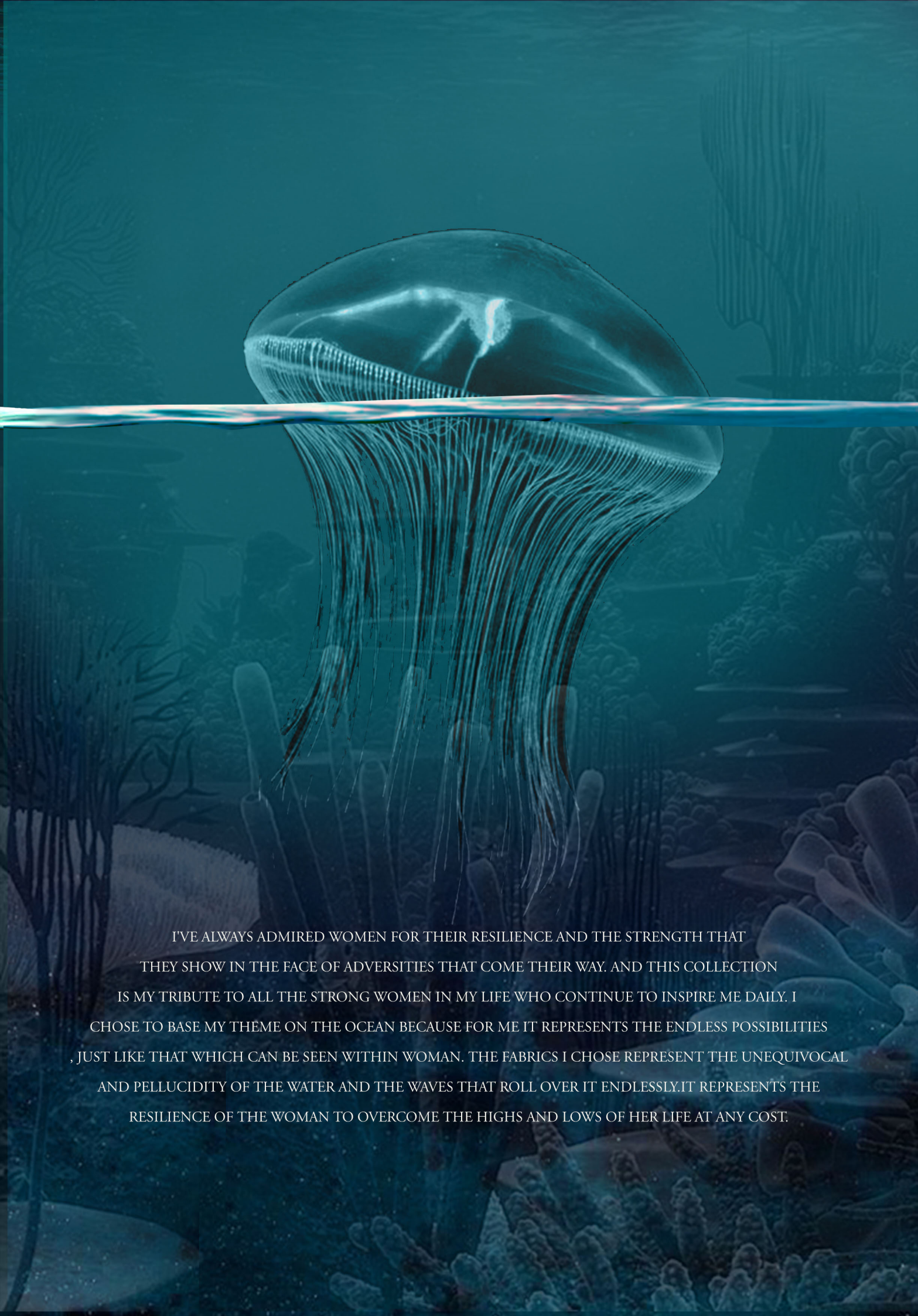


# SUBMERGED

SPRING/ SUMMER 2020-21

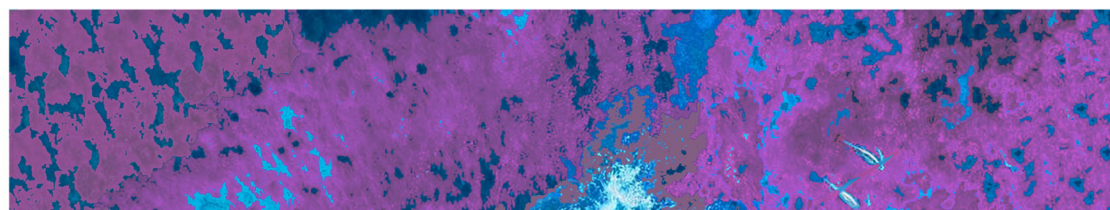
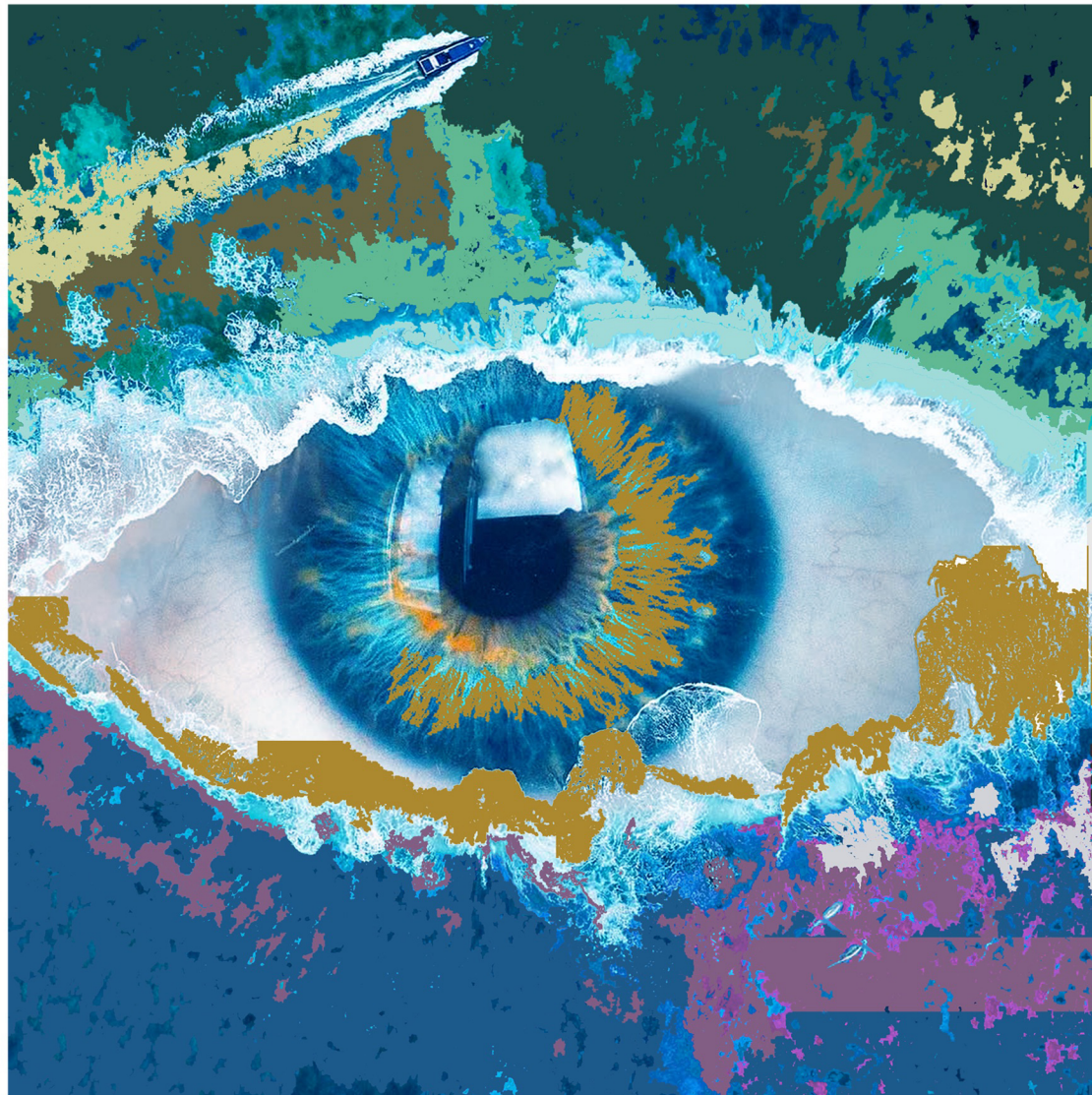
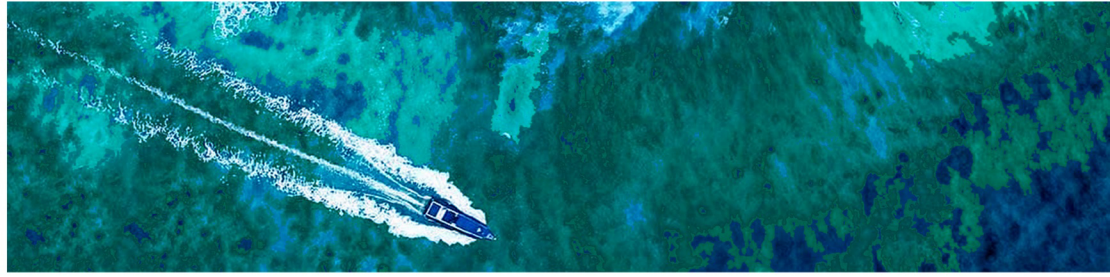
MARY ANN



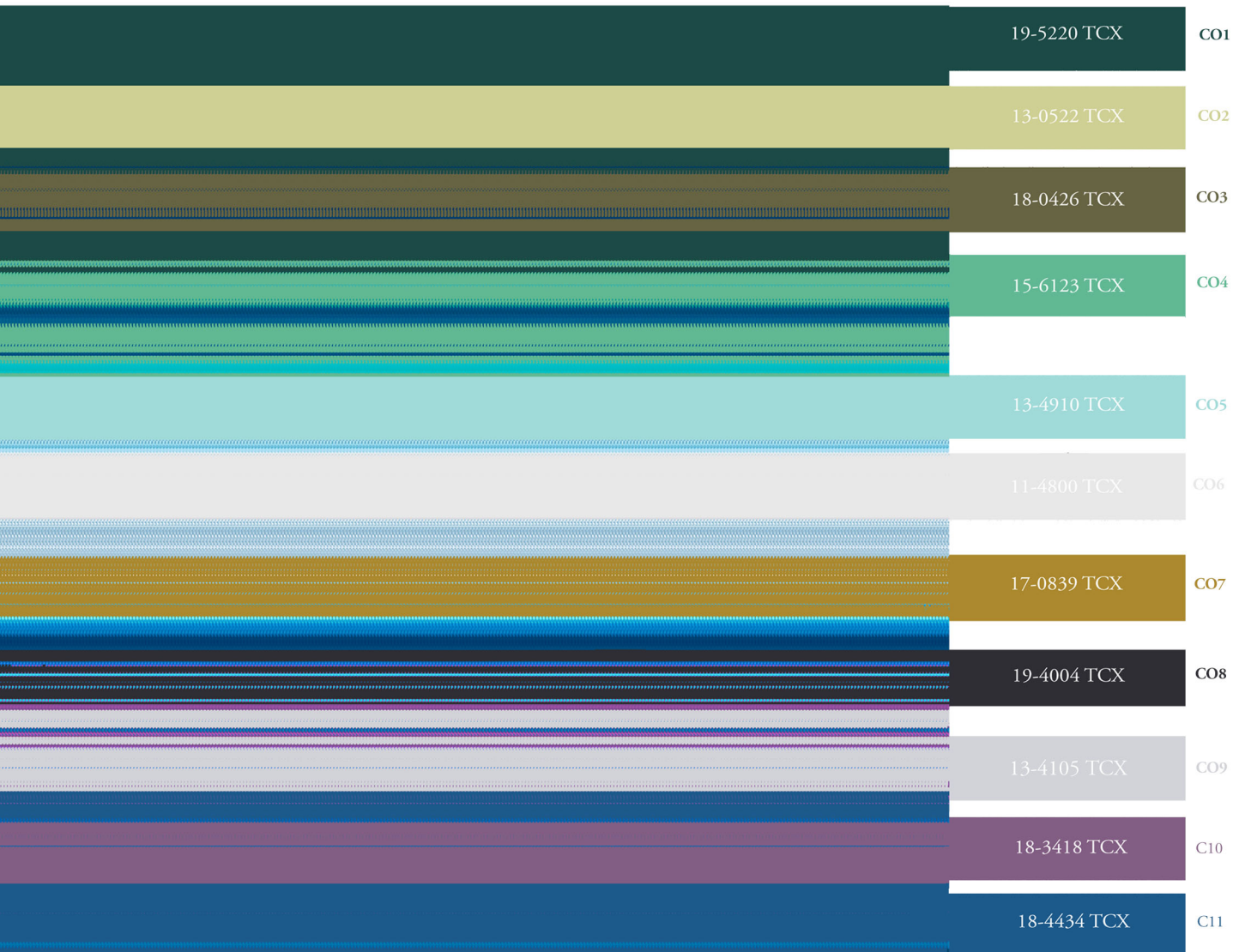
A large, translucent jellyfish with long, flowing tentacles is the central focus, swimming in a deep teal ocean. A horizontal line representing the water's surface cuts across the middle of the frame. The background is filled with various coral reefs and sea anemones, creating a rich, textured underwater scene. The lighting is soft and diffused, highlighting the delicate structure of the jellyfish and the surrounding marine life.

I'VE ALWAYS ADMIRERD WOMEN FOR THEIR RESILIENCE AND THE STRENGTH THAT THEY SHOW IN THE FACE OF ADVERSITIES THAT COME THEIR WAY. AND THIS COLLECTION IS MY TRIBUTE TO ALL THE STRONG WOMEN IN MY LIFE WHO CONTINUE TO INSPIRE ME DAILY. I CHOSE TO BASE MY THEME ON THE OCEAN BECAUSE FOR ME IT REPRESENTS THE ENDLESS POSSIBILITIES , JUST LIKE THAT WHICH CAN BE SEEN WITHIN WOMAN. THE FABRICS I CHOSE REPRESENT THE UNEQUIVOCAL AND PELLUCIDITY OF THE WATER AND THE WAVES THAT ROLL OVER IT ENDLESSLY.IT REPRESENTS THE RESILIENCE OF THE WOMAN TO OVERCOME THE HIGHS AND LOWS OF HER LIFE AT ANY COST.

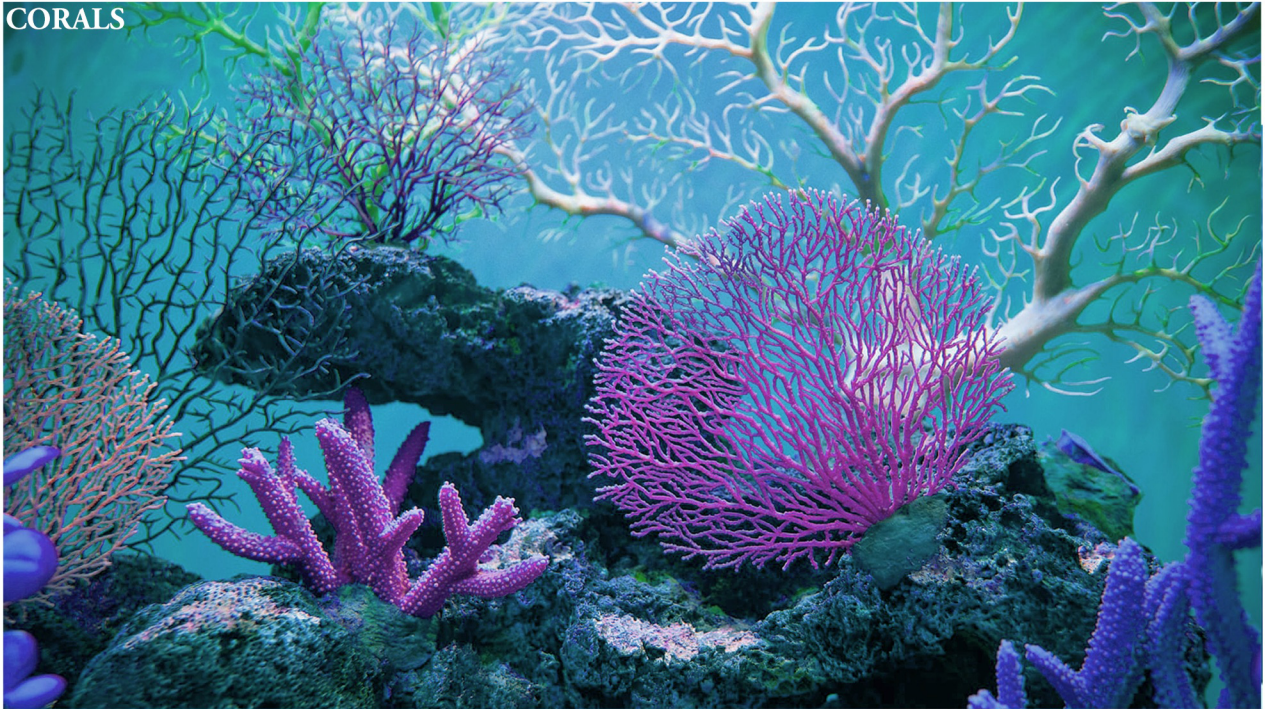
SUBMERGED  
S/S 2020



# COLOR CHART



CORALS



TRANSPARENCY



UNDERWATER CAVE

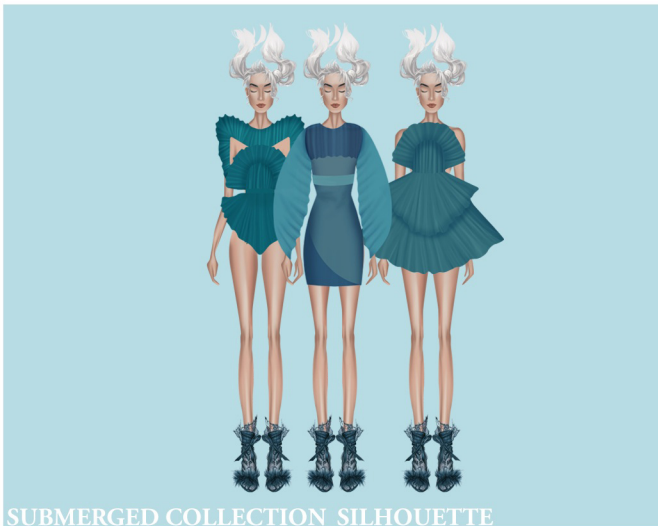


KELP



SEA CREATURES

SUBMERGED COLLECTION  
PRINT



SUBMERGED COLLECTION SILHOUETTE



SUBMERGED COLLECTION MANIPULATION



SUBMERGED COLLECTION  
FABRIC



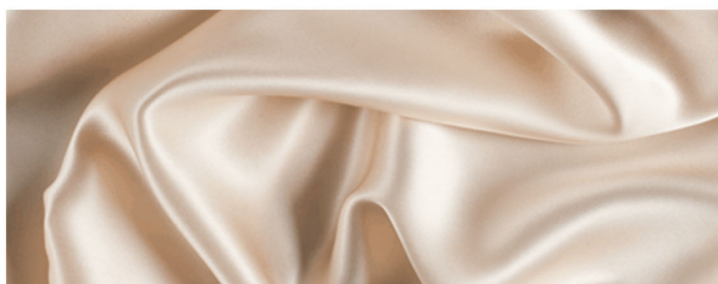
**F01**

NAME: PLEATED SATIN

CONTENT: 160 gsm

WIDTH: 44"

PRICE: Rs.300/m



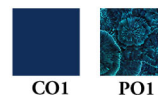
**F02**

NAME: SILK SATIN

CONTENT: 100% SILK

WIDTH: 44"

PRICE: Rs.60/m



**F03**

NAME: ACCORDIAN PLEATED

CONTENT: 150gsm

WIDTH: 56"

PRICE: Rs.750/m



3



**F04**

NAME: SCUBA

CONTENT: POLYESTER

WIDTH: 63"

PRICE: Rs.650/m



4



**F05**

NAME: ORGANZA

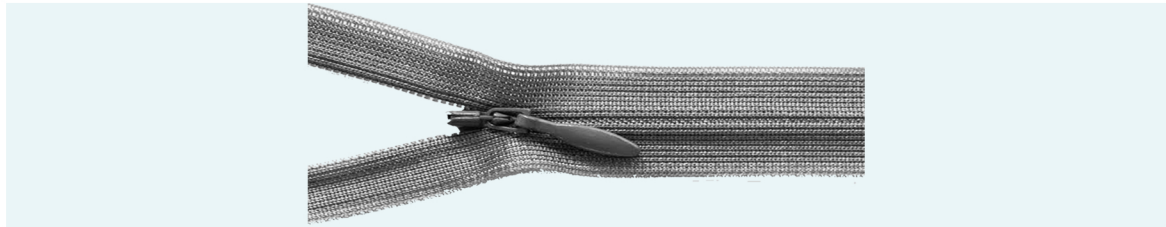
CONTENT: 100% SILK

WIDTH: 58"/60" WIDE

PRICE: RS.60/m







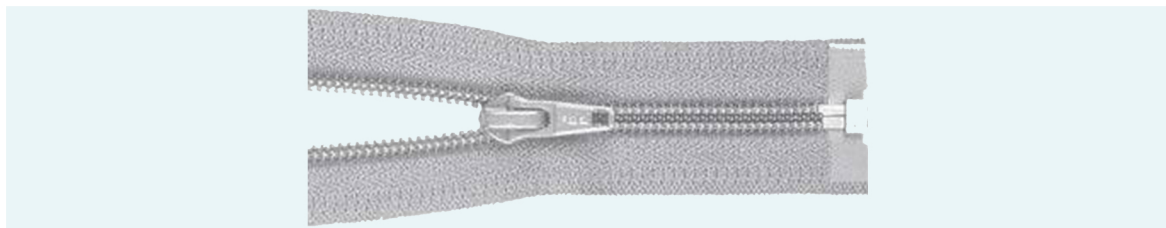
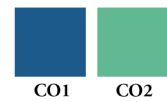
LENGTH- 15CM



**Z01**

CONCEALED COIL ZIPPER ( INVISIBLE)  
POLYESTER

CHAIN- 3MM? TAPE-POLY 13MM  
SLIDER- AUTO LOCK, ALLUMINUM  
3.4MM DA



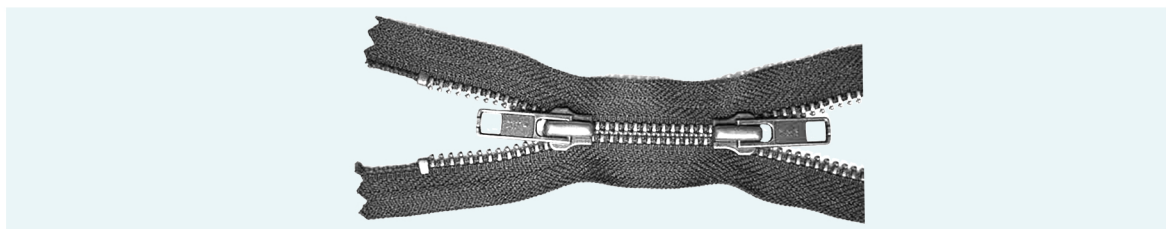
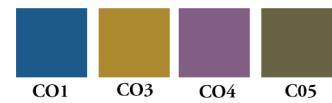
LENGTH- 15CM



**Z02**

COIL METAL CLOSED-END  
POLYESTER

CHAIN- 3MM? TAPE-POLY 13MM  
SLIDER- AUTO LOCK, ALLUMINUM  
3.4MM DA



LENGH- 45CM



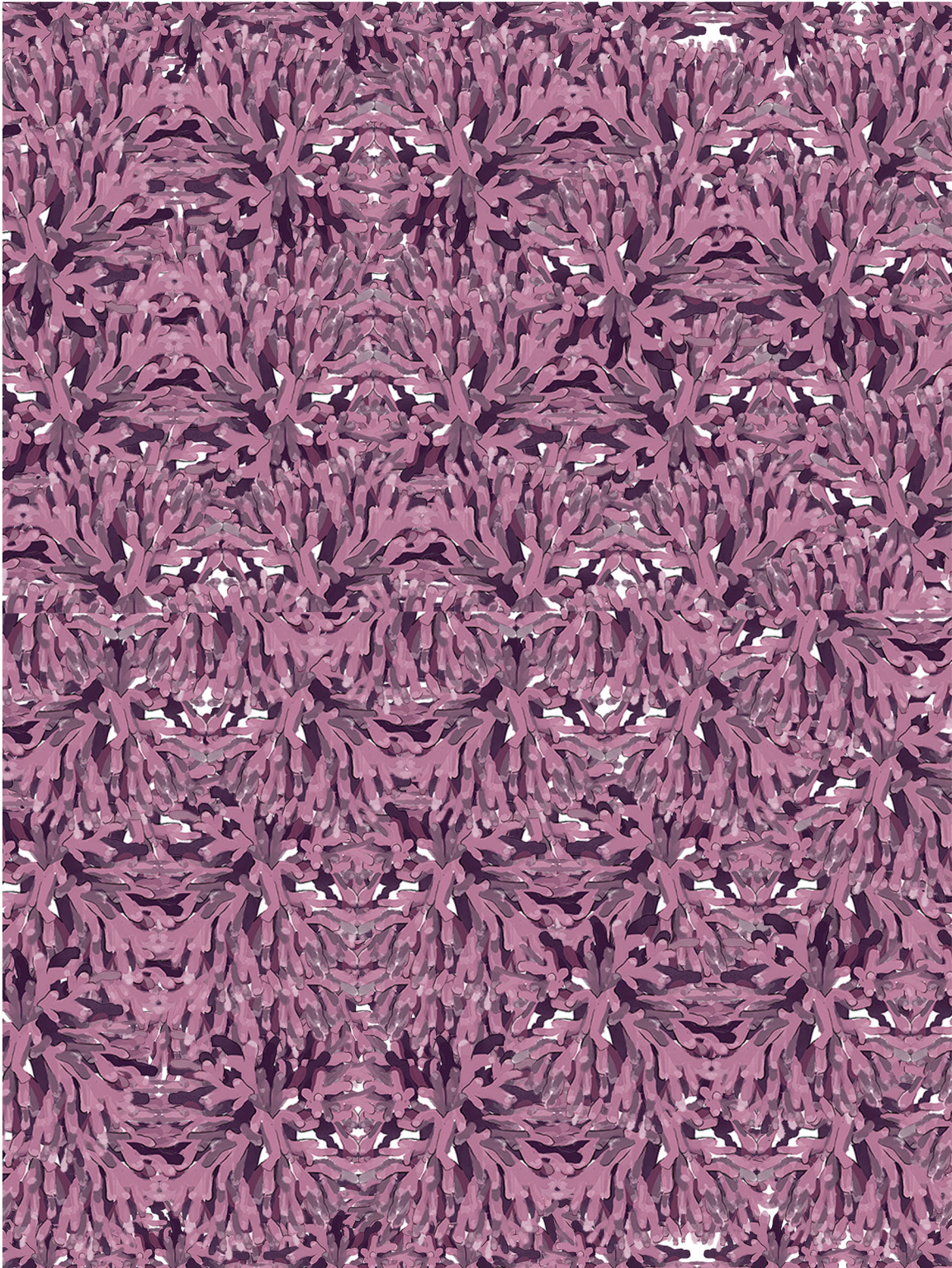
**Z03**

METAL MOVABLE (OPEN) ZIPPER

CHAIN- 3MM? TAPE-POLY 13MM  
SLIDER- AUTO LOCK, ALLUMINUM  
3.4MM DA



PO1



PRINT SCALE

PO1



TOTAL PRINT RATIO



REAL DIMENSION

## DESCRIPTION

THIS PRINT IS INSPIRED BY THE CORAL REEFS IN THE OCEAN

## FABRIC



F1

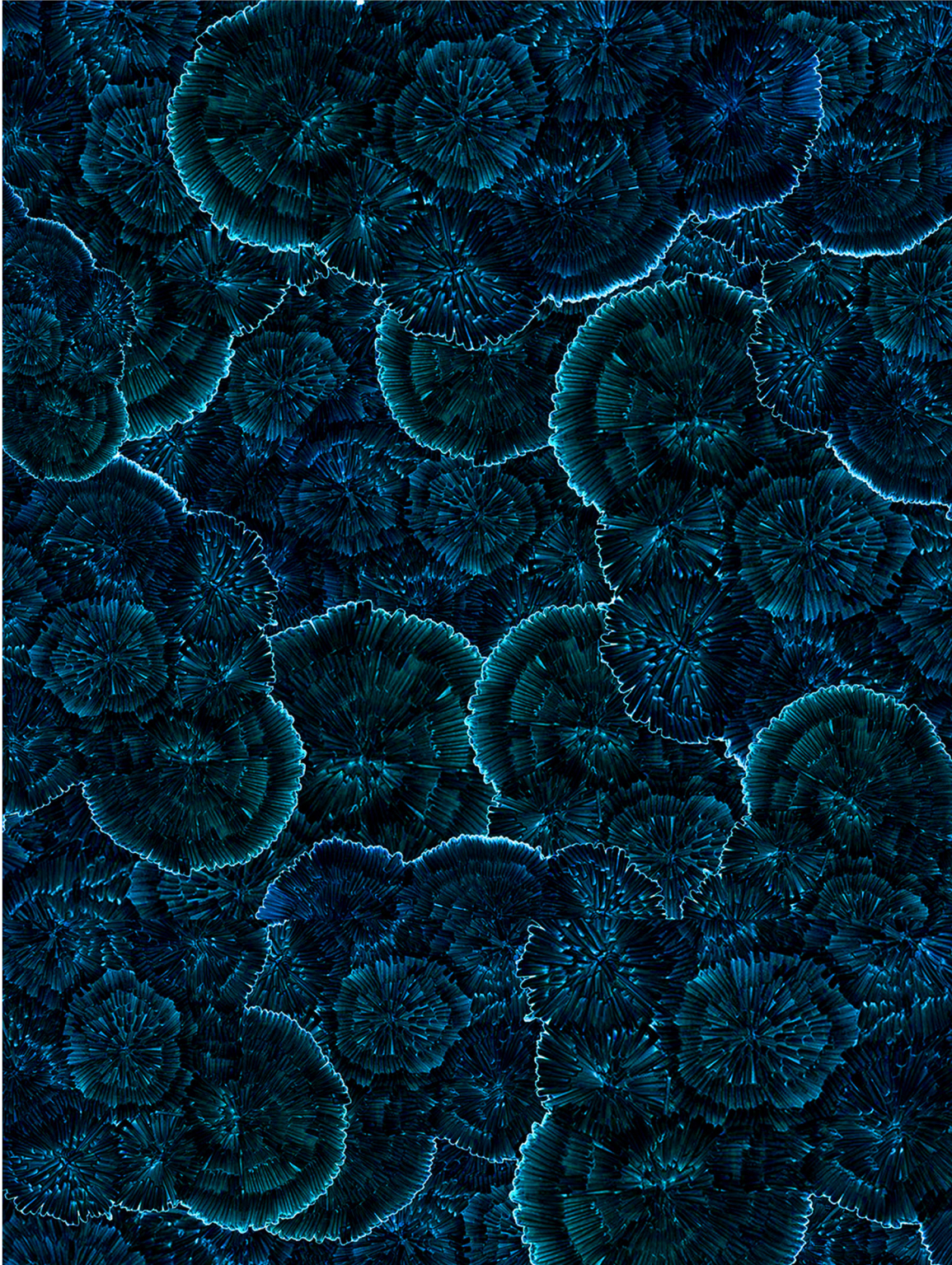
## PRINT TECHNIQUE:

DIGITAL PRINTING



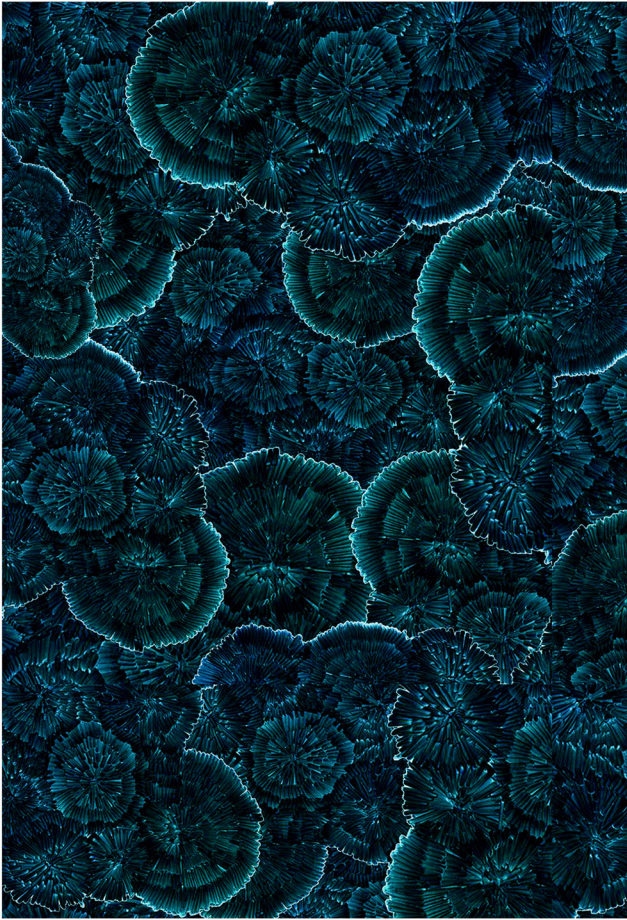
OUTFIT REFERENCE

PO2

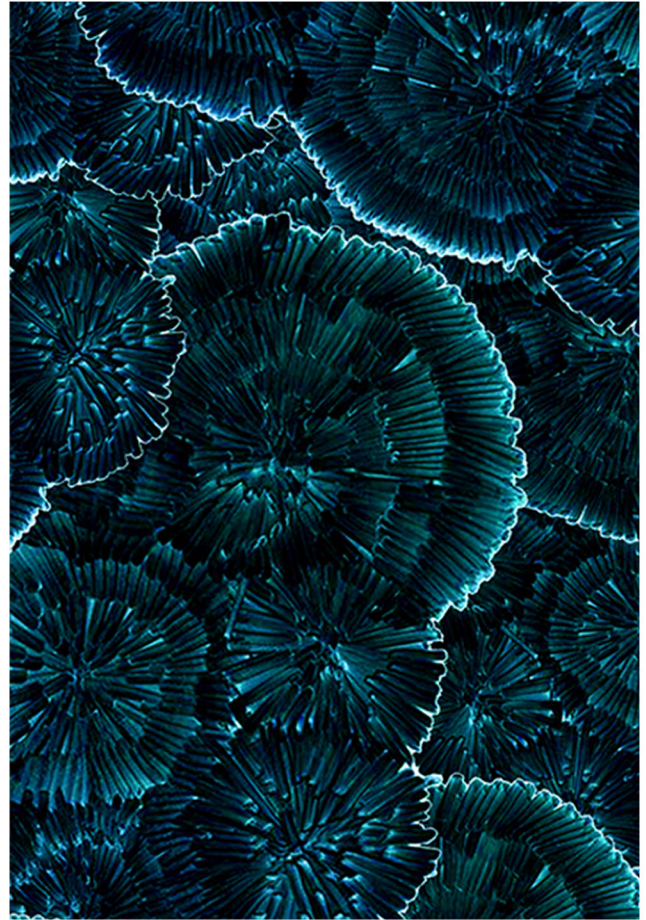


PRINT SCALE

PO2



TOTAL PRINT RATIO



REAL DIMENSION

**DESCRIPTION**

THIS CORAL PRINT GIVES A FEEL OF BEING DEEP IN THE OCEAN

**FABRIC**



F1

**PRINT TECHNIQUE:**

DIGITAL PRINTING



OUTFIT REFERENCE

MO1



MANIPULATION SCALE

MO1



TOTAL PRINT RATIO



REAL DIMENSION

**DESCRIPTION**

CHOSE PIN TUCKS TO GET THE CRISP LOOK

**FABRIC**



F1

**MANIPULATION TECHNIQUE:**

PINTUCKS



OUTFIT REFERENCE

MO2



MANIPULATION SCALE



MO2



TOTAL PRINT RATIO



REAL DIMENSION

**DESCRIPTION**

CHOOOSE RUFFLES TO GET VOLUME N STRUCTURE TO THR GARMENT

**FABRIC**



F1

**MANIPULATION TECHNIQUE:**

RUFFLES



OUTFIT REFERENCE

MO3



MANIPULATION SCALE

MO3



TOTAL PRINT RATIO



REAL DIMENSION

**DESCRIPTION**

KNIFE PLEATES GIVES THE GAMENT A FINISHED LOOK

**FABRIC**



F1

**MANIPULATION TECHNIQUE:**

KNIFE PLEAT



OUTFIT REFERENCE

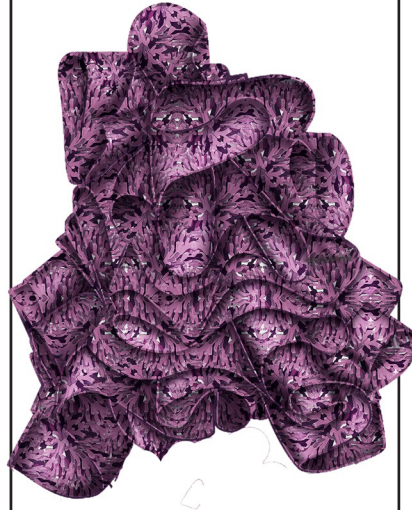
OUTFIT 1



OUTFIT 2



OUTFIT 3



OUTFIT 4



OUTFIT 5



OUTFIT 6



OUTFIT 7



OUTFIT 8



OUTFIT 9



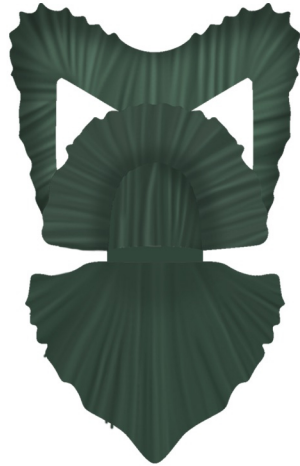
OUTFIT 10



OUTFIT 11



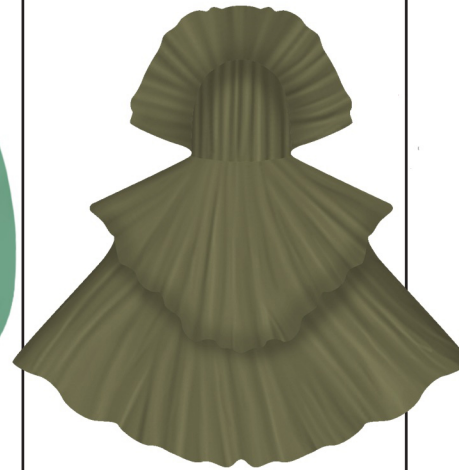
OUTFIT 12



OUTFIT 13



OUTFIT 14



OUTFIT 15



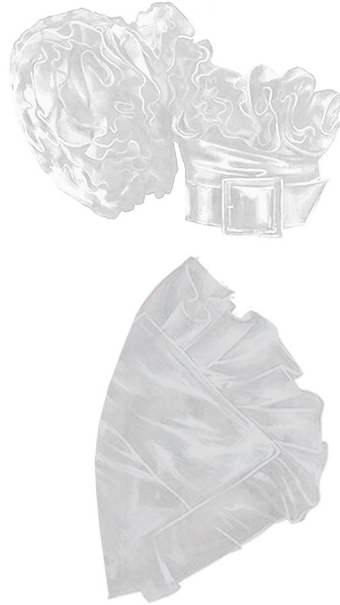
OUTFIT 16



OUTFIT 17



OUTFIT 18



OUTFIT 19



OUTFIT 20



<b>CATEGORY</b>	<b>FORMAL</b>	<b>CASUAL</b>
T-SHIRT		2
TROUSERS	1	1
LONG SKIRT		3
SHORT SKIRT		2
LONG DRESS		3
JUMPSUIT	2	2
CROP TOP		2
MINI DRESS		5
SHORTS		1
BELT	1	1

SUM UP	4	22
--------	---	----



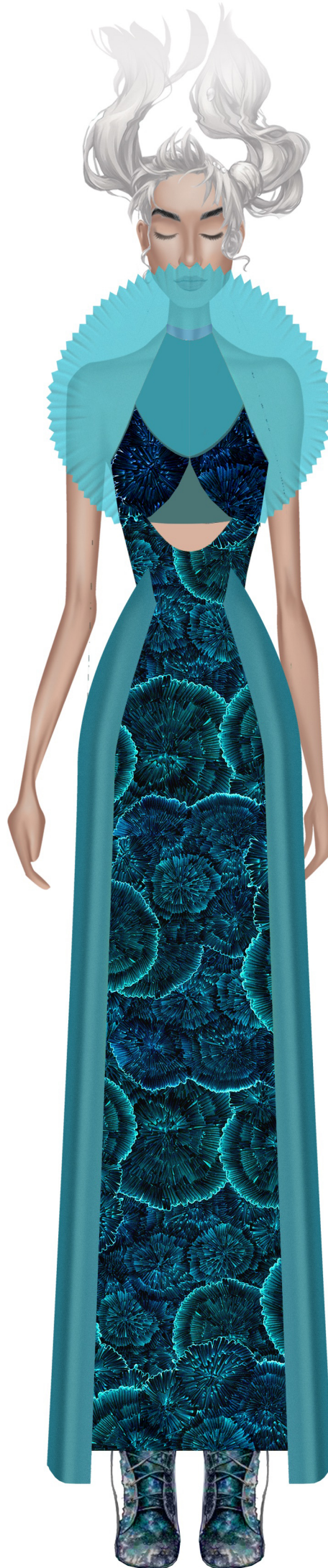














~~SUBMERGED~~  
S/S 2020

ILLUSTRATION CHART  
OUTFIT: 08























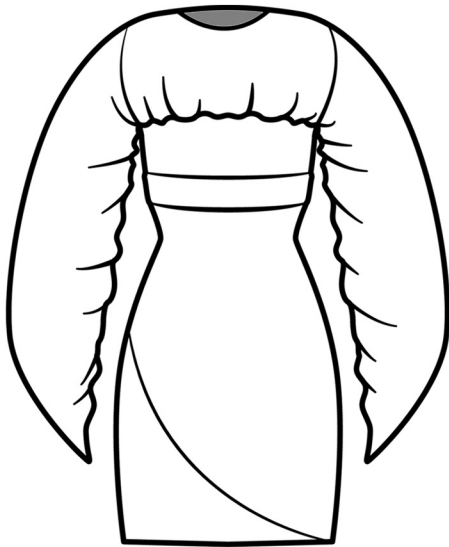




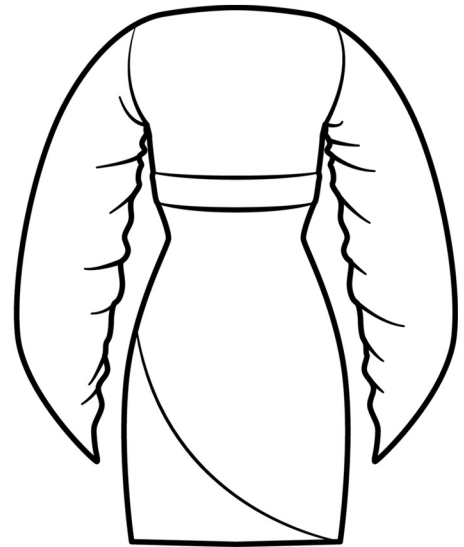




FRONT



BACK



SL

CL

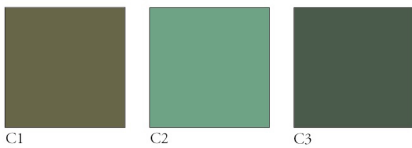
WL

HL

DESCRIPTION

HIGH NECK MINI DRESS WITH VOLUMINOUS SLEEVE

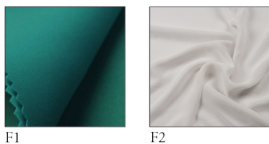
COLORS



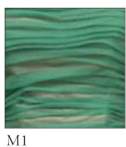
MEASUREMENTS

PROTOTYPE SIZE: S  
SHOULDER WIDTH: 14.5"  
BUST: 33"  
WAIST: 27"  
HIP: 37"  
BACK LENGTH: 22"

FABRIC

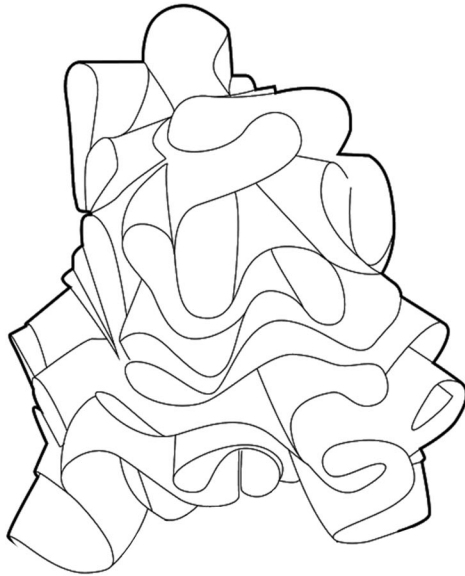


MANIPULATION

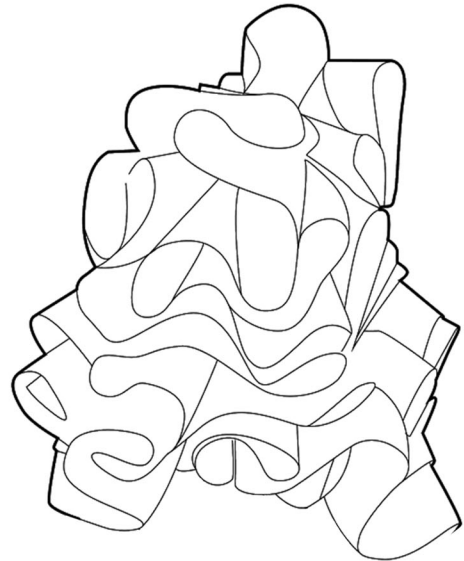


OUTFIT REFERENCE

FRONT



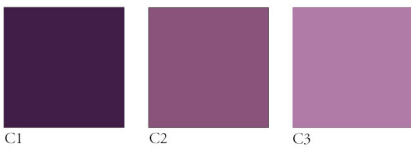
BACK



DESCRIPTION

RUFFLED ONE SHOULDER MINI DRESS

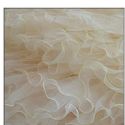
COLORS



FABRIC



MANIPULATION



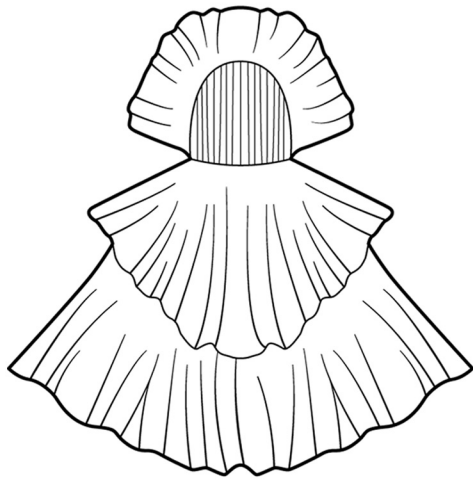
MEASUREMENTS

PROTOTYPE SIZE: S  
SHOULDER WIDTH: 14.5"  
BUST: 32"  
WAIST: 24"  
HIP: 34"  
BACK LENGTH: 22"

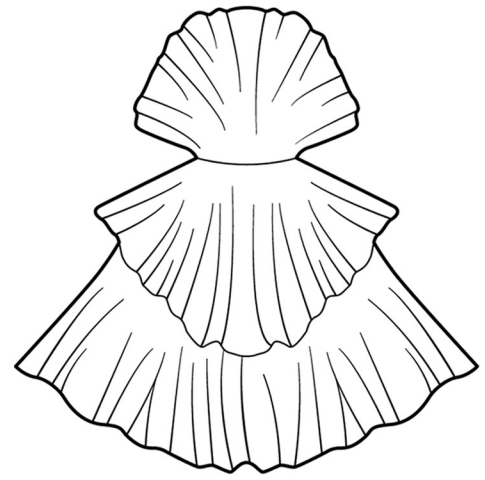


OUTFIT REFERENCE

FRONT



BACK



**DESCRIPTION**

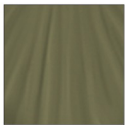
PLATED MINI DRESS

**COLORS**



C1

**FABRIC**



F1

**MANIPULATION**



M1

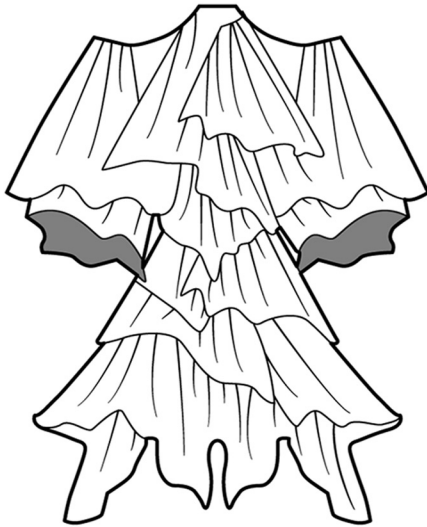
**MEASUREMENTS**

PROTOTYPE SIZE: S  
SHOULDER WIDTH: 14.5"  
BUST: 33"  
WAIST: 27"  
HIP: 37"  
BACK LENGTH: 22"

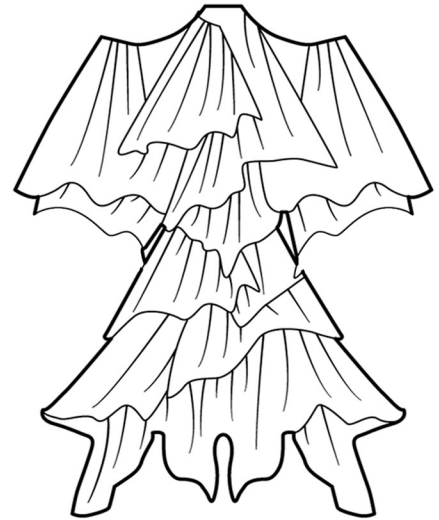


OUTFIT REFERENCE

FRONT



BACK



**DESCRIPTION**

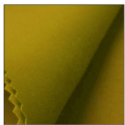
SHORT JUMPSUIT WITH VOLUMINOUS SLEEVE

**COLORS**



C1

**FABRIC**



F1

**MANIPULATION**



M1

**MEASUREMENTS**

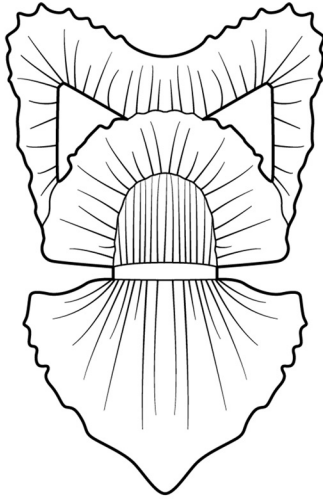
PROTOTYPE SIZE: S  
SHOULDER WIDTH: 14.5"  
BUST: 33"  
WAIST: 27"  
HIP: 37"  
BACK LENGTH: 22"



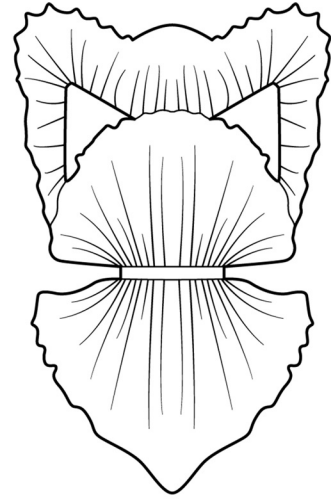
OUTFIT REFERENCE



FRONT



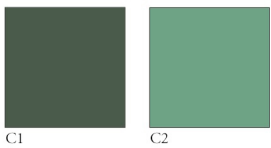
BACK



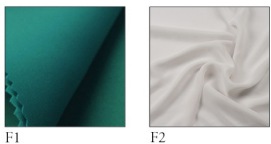
DESCRIPTION

FRILL JUMPSUIT WITH A BELT

COLORS



FABRIC



MANIPULATION



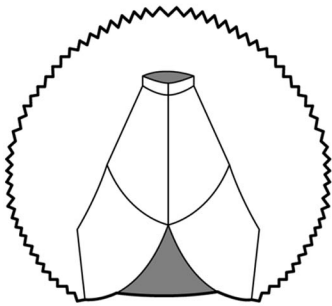
MEASUREMENTS

PROTOTYPE SIZE: S  
SHOULDER WIDTH: 14.5"  
BUST: 33"  
WAIST: 27"  
HIP: 37"  
BACK LENGTH: 22"

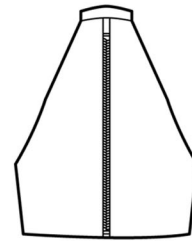


OUTFIT REFERENCE

FRONT



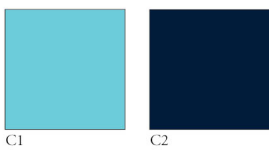
BACK



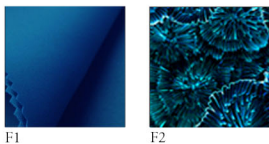
DESCRIPTION

MINI DRESS WITH FRILLED TOP

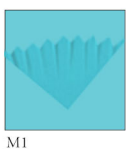
COLORS



FABRIC



MANIPULATION



MEASUREMENTS

PROTOTYPE SIZE: S  
SHOULDER WIDTH: 14"  
BUST: 32"  
WAIST: 27"  
HIP: 37"  
BACK LENGTH: 22"

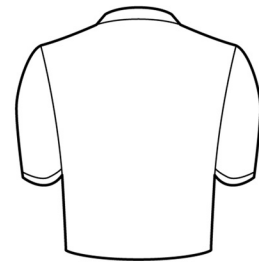


OUTFIT REFERENCE

FRONT



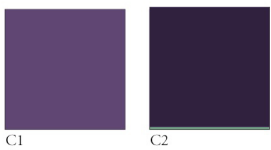
BACK



DESCRIPTION

T-SHIRT WITH CORAL PRINT ON THE BUST

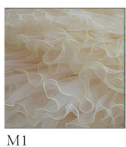
COLORS



FABRIC



MANIPULATION



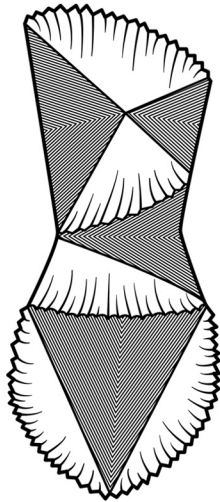
MEASUREMENTS

PROTOTYPE SIZE: S  
SHOULDER WIDTH: 14.5"  
BUST: 33"  
WAIST: 27"  
HIP: 37"  
BACK LENGTH: 22"

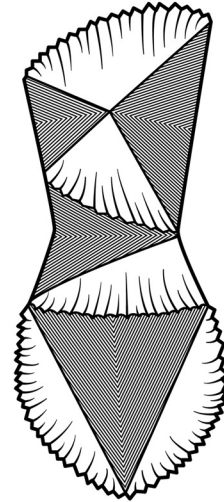


OUTFIT REFERENCE

FRONT



BACK



**DESCRIPTION**

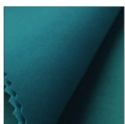
OFF SHOULDER SHORT DRESS

**COLORS**



C1

**FABRIC**



F1



F2



F3

**MANIPULATION**



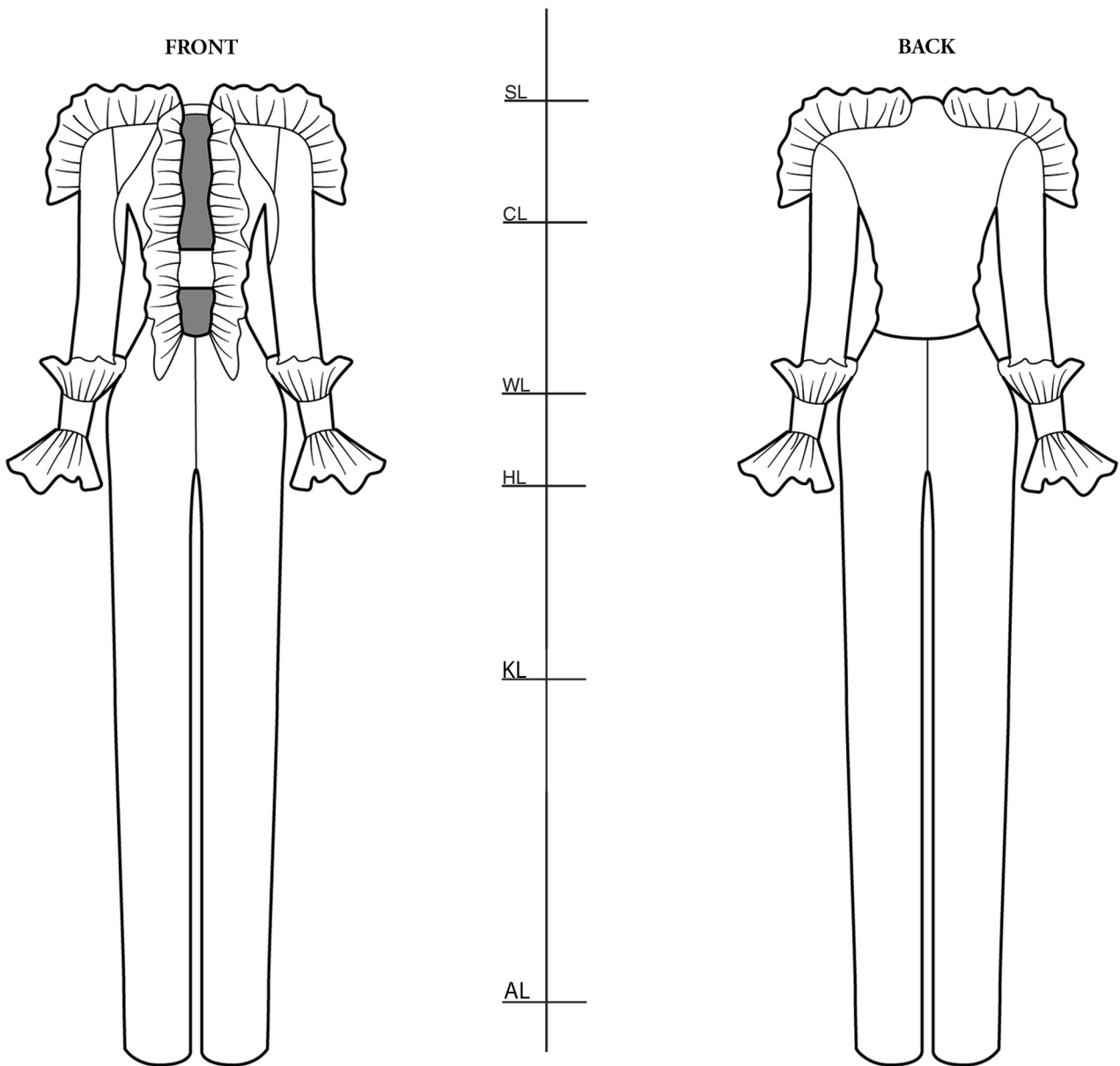
M1

**MEASUREMENTS**

PROTOTYPE SIZE: S  
SHOULDER WIDTH: 14.5"  
BUST: 33"  
WAIST: 27"  
HIP: 37"  
BACK LENGTH: 22"



OUTFIT REFERENCE



**MEASUREMENTS**

PROTOTYPE SIZE: S  
SHOULDER WIDTH: 14.5"  
BUST: 32"  
WAIST: 27"  
HIP: 37"  
BACK LENGTH: 44"

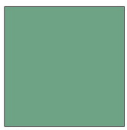
**DESCRIPTION**

JUMPSUIT WITH FRILL ON THE SHOULDER AND BASIC PANTS

**COLORS**



C1

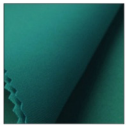


C2



C3

**FABRIC**



F1



F2

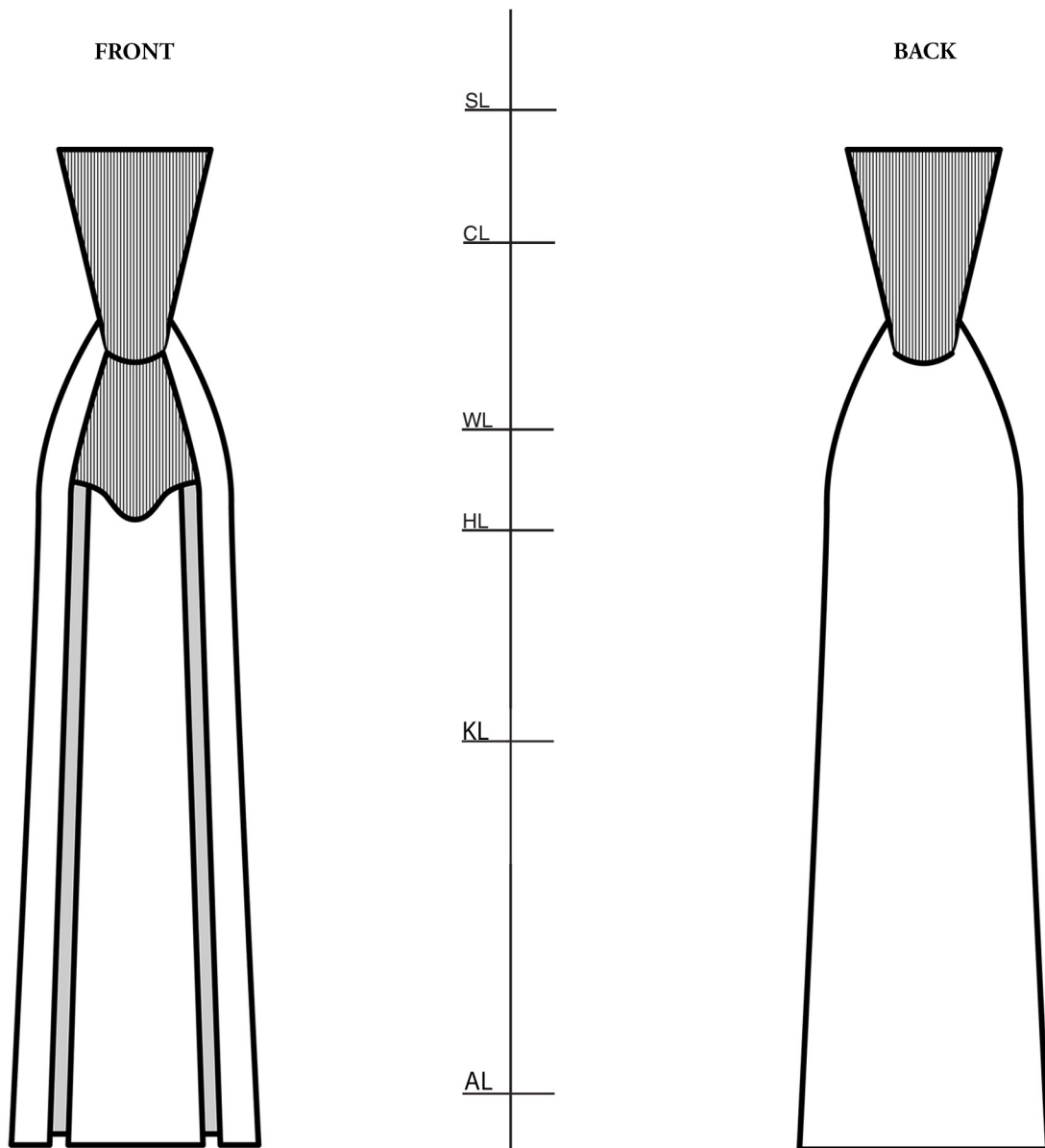
**MANIPULATION**



M1



**OUTFIT REFERENCE**



**MEASUREMENTS**

PROTOTYPE SIZE: S  
SHOULDER WIDTH: 14.5"  
BUST: 32"  
WAIST: 27"  
HIP: 37"  
BACK LENGTH: 44"

**DESCRIPTION**

LONG OFF SHOULDER DRESS WITH CORAL PRINT

**COLORS**



C1

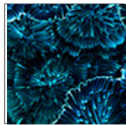


C2

**FABRIC**



F1



F2

**MANIPULATION**



M1



**OUTFIT REFERENCE**



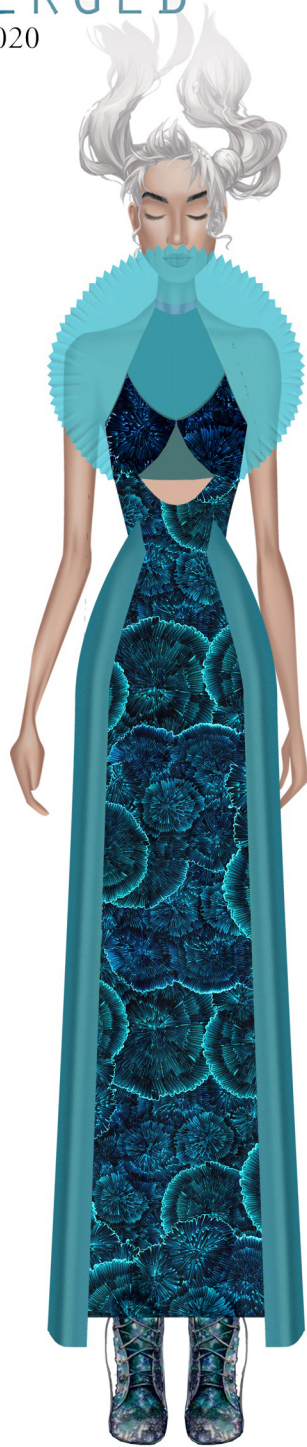
SUBMERGED  
S/S 2020

COLLECTION LINE UP 1



~~SUBMERGED~~  
S/S 2020

COLLECTION LINE UP 2



# SUBMERGED

S/S 2020

## COLLECTION LINE UP 3



~~SUBMERGED~~  
S/S 2020

COLLECTION LINE UP 4



SUBMERGED

*Mary Ann*